

REFLECTIONS RULES PACKET



NOTE REGARDING PACKET FORMS ON CD and CALIFORNIA STATE PTA WEBSITE

www.capta.org

This packet is on the service mailing CD as well as on the California State PTA website, www.capta.org in a “fill-in-the-blank” format.

This will allow you to pre-type information **REQUIRED** on the top and bottom of all your Student Entry Forms.

Use the separate Student Entry Form file on the CD to enter: Unit/Council Name, District #, and Reflections Chair Information.

Then save the form as a new “original” form, print and distribute to your students or put in your newsletters.

You can also complete the Unit Reporting Form A. Use the separate Unit Reporting Form A file on the CD and enter your data to submit a legible copy to your council or district (if not in a council).

Simply: Set cursor at the beginning of each line and type or set cursor inside table boxes to enter information.

District Chairs ONLY:

Please use the files with the “pub_001.pdf” title on CD, complete forms and print.

These files are formatted to automatically email completed forms directly to the state Reflections data coordinator.

If it does not work, then use the “fill-in-the-blank.doc” format on the CD and email to SandyRitterPTA@cox.net.

REFLECTIONS RULES PACKET



2008 – 2009 Reflections Program Theme: “Wow!”

This Reflections Chairs’ packet includes:

- Information for Unit PTAs
- Theme Search Application for 2010-2011
- General Student Participation Rules
- Arts Area Rules
- Official Entry Form
- Local Participation Form

THEME SEARCH FORMS: MAIL DIRECTLY TO STATE PTA OFFICE

Deadline for 2010-2011 Theme Search Forms in State PTA Office: November 1, 2008

- Reflection entries will not be accepted unless they are received through channels.
- Entries are forwarded from Units to Councils, from Councils to District PTAs, and from District PTAs to the California State PTA office.
- Out-of-Council Units forward entries directly to their District PTA Reflections Chairman.
- Please verify your Council/District PTA deadlines and schedule your program accordingly.

Deadline for entries to unit chairmen on or before: _____

Deadline for entries to council chairmen on or before: _____

Deadline for entries to district PTA chairmen on or before: _____

Deadline for entries in the State PTA office on or before: January 23, 2009

Deadline for entries to National PTA headquarters on or before: March 2, 2009

To maintain the integrity of this packet, the California State PTA Reflections Coordinator strongly urges you to copy the forms and retain the originals for future use.

It is also recommended that you fill in the unit/council and district PTA blanks on the Entry Form prior to copying and disbursing to students.

PTA Reflections Program NATIONAL AWARDS AND RECOGNITION

The national PTA organization gives out 12 Awards of Excellence in each arts area—three in each of the four grade divisions. Up to five Awards of Merit may be given in each grade division of each arts area.

Award of Excellence recipients receive a \$200 cash award and a silver-plated Reflections medallion. Award of Merit recipients receive a silver-plated Reflections medallion. Additional sponsor gifts may be given.

Outstanding Interpretation Awards

Six Outstanding Interpretation Award recipients—one from each arts area—are chosen from among all the Award of Excellence recipients. The Outstanding Interpretation Awards recognize the most creative interpretation of the theme in each of the arts areas, regardless of grade division.

Each of the six Outstanding Interpretation Award recipients receives the following:

- An expense-paid trip for him/herself and one adult to the PTA National Convention
- An \$800 arts education award from the national PTA organization
- A gold-plated Reflections medallion
- Additional sponsor-related awards

In addition:

- A \$200 arts education award is given to the student's local PTA by the national PTA organization

Notification to Students

All students whose entries reach the national level of judging will receive a letter of congratulations from the national PTA organization in June. Recipients of Awards of Excellence and Awards of Merit will be notified in writing by May 1. Outstanding Interpretation Award recipients and their state arts chairs will be notified by telephone in April.

Return of Artwork

Entries that receive national awards will be featured in the Reflections Program Gallery on the PTA national website. The national PTA office will make every effort to return the photographs and visual artwork by January of 2010, following the completion of the gallery. Some entries may also be chosen to participate in other shows or exhibits. In such cases, the national PTA office will contact the students via mail to inform them of the approximate date of the return of their artwork. The national PTA office does not return any literature, musical composition, dance choreography, or film production entries.

Contact your state PTA for its artwork return policy.

2008–2009 PTA Reflections Program
LOCAL, COUNCIL, AND DISTRICT/REGION PTA INFORMATION:
FAQS AND THE JUDGING PROCESS
Theme: “Wow!”

The national PTA office receives many inquiries about eligibility, specific arts areas, student information protection, and the judging process. The following information addresses these concerns.

Frequently Asked Questions

Participation

Who is eligible to participate? Participation in the Reflections Program is open to any student through a local PTA/PTSA in good standing. It is the responsibility of the local unit to determine each student’s eligibility in the Reflections Program.

May students participate through a local PTA not affiliated with their school? State PTAs may adopt policies regarding this situation. The national PTA organization requires only that national entries come from local PTAs/PTSA’s in good standing.

May students no longer attending a PTA school still enter the Reflections Program through their former school? State PTAs establish their own policies regarding this situation. Since some states restrict this practice, please contact your state PTA about its participation policy.

May home-schooled students participate in the Reflections Program? State PTAs may adopt their own policies regarding this situation. The national PTA organization requires only that national entries come from local PTAs/PTSAs in good standing.

Under what division should developmentally challenged students participate? PTA believes that each child with a disability should be provided a free and appropriate public education. Therefore, the Reflections Program at the national level does not have a special division for students with disabilities. The national PTA organization believes it is the right of parents to place their child in the Reflections Program grade division that best reflects the child’s developmental age. However, guidelines for state and local Reflections Programs may vary. Check with your state PTA for its guidelines.

May developmentally or physically challenged students receive help from a parent or teacher? Rules or policies regarding developmentally or physically challenged students are left up to the discretion of each state PTA and may be handled on a case-by-case basis.

Arts Areas

Use of copyrighted material

May students use copyrighted material as a source for their artwork? Use of copyrighted material is not acceptable in any submission, with the following exceptions:

Photographs, visual artworks, and films may include public places, well-known products, trademarks, or certain other copyrighted material as long as that copyrighted material is incidental to the subject matter of the piece and/or is a smaller element of a whole. The resulting work cannot try to establish an association between the student and the trademark/business/material, or influence the purchase/non-purchase of the trademarked good.

Visual arts collages may include portions of existing copyrighted works, such as photographs, magazine clippings, Internet images, and type cut out of a newspaper, as long as those portions of copyrighted works are used to create a completely new and different work of art. A collage should be judged for its whole, not by its parts, and whether the resulting work stands as a creative, *original* work of art on its own.

Dance choreography and film production entries may use copyrighted music. The title, composer, and performer of any music used must be credited and documented on the Student Entry Form.

What should an arts chair do if it is discovered that a child has plagiarized an entry? Unfortunately, plagiarism is not uncommon. Plagiarized entries should be disqualified and returned to the student. If a plagiarized entry has already received an award, the arts chair needs to determine if the award (including award money, pins, certificates, etc.) should be returned. The arts chair and local unit will need to work with the student and the student’s family to help the student understand the seriousness of copying someone else’s work and claiming it as their own. School counselors or teachers might also be able to provide assistance in helping the student deal with the discovery and the consequences.

Literature

May a student use unacceptable language in an entry?

The Reflections Program makes no restriction on content or subject in the literature area. Students who are submitting entries created in a school setting should be mindful of school and/or local or state PTA standards for writing. Judges should be reminded that entries are to be reviewed for creativity, artistic merit, and interpretation of the theme.

Musical composition

May students use notation software for creating musical composition scores? A student may use notation software. Imported MIDI files or files from other sources are not acceptable.

Photography

May students submit computer-manipulated photos? Images may be manipulated conventionally or digitally.

Visual arts

May students submit visual arts pieces generated on a computer? The national PTA organization accepts visual artworks created digitally.

Dance choreography

Does the choreographer (the student submitting the entry) have to be one of the performers? The choreography must be the work of one student and must demonstrate both creativity and interpretation of the theme. There may be up to three dancers. The choreographer need not be one of the dancers.

Film production

Does the student submitting the entry have to appear in the film? The student must be the director, screenwriter, and cameraperson. He or she does not have to appear in the film.

Display of Artworks

What student information can be displayed with artworks? When artwork is on display, label the back of the piece with only the student's name, school, and town. Do not have the Student Entry Form attached to the back of the artwork in a display setting. No one outside of PTA should have access to student information. Develop a system to easily match and reattach Student Entry Forms to artwork for returning to the student or sending on to the next judging level.

Judging Process

Finding Judges

You may already have a judging system in place that works well for your program. However, if you are having difficulty recruiting qualified judges, here are some ideas of others to invite to participate:

- Art, literature, dance, film, journalism, and music educators or college/university professors
- Teachers from other schools participating in the Reflections Program
- Art museum directors, docents, curators, or historians
- Professional photographers and local artisans
- Local symphony orchestra or choral directors, musicians, conductors, or composers
- Local dance conservatories, dance studios, ballets, or theaters
- Local multimedia/video production companies
- Newspaper journalists, editors, or photographers
- Local television stations
- Arts advocacy organization presidents or directors

Inviting professionals in the arts or influential community leaders to participate in Reflections Program judging, increases the exposure of the PTA, its work, and the wonderful benefits students derive from participating in the arts.

If a judge knows a student participant, the judge should remove himself or herself from the judging process for that particular arts area to prevent a conflict of interest. Teachers from the host school serving as judges would also

have a conflict of interest, so it is better to invite teachers from another school that offers the Reflections Program.

Remember to recognize judges in promotions and thank them for their participation. Some PTAs provide each judge with a small gift or certificate of appreciation.

Judging at the National Level

All national entries are judged on artistic merit, creativity, and interpretation of the theme.

- **Literature, musical composition, dance choreography, and film production:** Each of the four judges in the arts area receives entries from one grade division to review. Each judge selects 10 entries from his or her assigned grade division for presentation to the full panel. After the presentation, the judges assign awards of excellence and awards of merit in each grade division.
- **Photography and visual arts:** Entries are judged from electronic files of the original artwork. The judges view all of the artwork for one grade division and select the pieces that they would like to see in a second round of viewing. In the second round, they pick the top eight and assign awards of excellence and awards of merit. They then repeat the process for the other grade divisions.
- **Tiebreakers:** If two entries are judged as equal in all areas, the entry that best interprets the theme receives more recognition.
- **Outstanding Interpretation selection:** All recipients of awards of excellence in each arts area are reviewed together. The piece in each arts area that best interprets the theme is selected for the Outstanding Interpretation Award.

A local, council, or regional PTA might want to use a similar judging process.

Blind Judging

It is important to conduct *blind judging*—where judges do not see the artists' names—in situations or settings where judges may know a student or a work.

- **Literature:** Distribute photocopies of *only* the front side of each literature entry. However, send the *original* manuscript of each winning entry on to the next level of judging.
- **Musical composition, dance choreography, and film production:** For each arts area, prepare a CD or DVD of all the entries, as well as a list of the entries, using a code for the students' names. Include the grade division, title of work, playing time, and artist statement in the list of entries.
- **Photography and visual arts:** Cover the personal information attached to the artwork.

Beyond the local PTA level, blind judging will need to occur only if there is a chance that the judges will recognize a student's entry. In most situations, judges at the council, regional, and state PTA levels should be able to use the original materials for judging.



National PTA Reflections Program

Theme Search for 2010–2011

National PTA is looking for a theme for its Reflections Program for 2010–2011. The student who submits the winning entry will receive \$100, and his or her theme will be presented at the 2009 National PTA Convention. Use this form to submit theme ideas. Only signed original forms will be considered. Please submit entries to your state PTA office.

State deadline for theme submissions: November 1, 2008

Local PTA/PTSA _____

PTA/PTSA president _____

Address _____

City/State/ZIP _____ Daytime phone () _____

E-mail address _____ Eight-digit National PTA ID 00 _ _ _ _ _

Student's name _____ Grade _____

Address _____

City/State/ZIP _____ Daytime phone () _____

E-mail address _____ School name _____

Theme idea _____

Parent/guardian's signature _____

**All entries must be received by November 1, 2008 to be considered.
No Facsimiles will be accepted.**

Mail to: California State PTA
Attention: Reflections Coordinator
2327 L Street
Sacramento, CA 95816

Reflections Program Themes 1970-2010

Reflections: Children and Youth Mirror Their World	1969-1970
Reflections: Children and Youth Look to Tomorrow	1970-1971
Reflections: America, The Beautiful, The Ugly	1971-1972
Reflections: This is Our Country	1972-1973
From Sea to Shining Sea	1973-1974
Our Heritage—Our Hopes	1974-1975
Spirit of 76' – Miracle of America	1975-1976
What the World Needs Now	1976-1977
Love Is	1977-1978
Look Out Your Window	1978-1979
Behind the Gates of Tomorrow	1979-1980
What a Family Means to Me	1980-1981
What Makes Me Smile	1981-1982
Life in These United States	1982-1983
I Have a Dream	1983-1984
What Sparks My Imagination	1984-1985
From Liberty's View	1985-1986
In Celebration: A Past to Remember, A Future to Mold	1986-1987
Wonders of the World	1987-1988
Proud Experiences	1988-1989
Where Does the Sky End?	1989-1990
If I Had a Wish	1990-1991
Exploring New Beginning	1991-1992
Imagine That	1992-1993
If I Could Give the World a Gift	1993-1994
Dare to Discover	1994-1995
Just Open Your Eyes and See	1995-1996
It Could Happen	1996-1997
Wouldn't it be Great if	1997-1998
Suddenly you turn around and...	1998-1999
Anything is possible...	1999-2000
It would be really strange if...	2000-2001
I hold in my hand...	2001-2002
Signs of Courage	2002-2003
I am really happy when...	2003-2004
A Different Kind of Hero	2004-2005
I wonder why...	2005-2006
My Favorite Place	2006-2007
I can make a difference by...	2007-2008
Wow!	2008-2009
Beauty Is...	2009-2010

2008–2009 PTA Reflections Program GENERAL STUDENT PARTICIPATION RULES

Theme: “Wow!”

Students must adhere to the following general participation rules as well as rules for their specific arts area.

1. Theme

The theme for the 2008–2009 PTA Reflection Program is “Wow!” Only new pieces of artwork inspired by the theme are acceptable.

2. Student Eligibility through Local PTAs

Students must participate in the Reflections Program through a local PTA/PTSA in good standing. Parent groups not affiliated with the national PTA organization are not eligible to sponsor this program. It is the responsibility of the state and local PTA/PTSA to determine each student’s eligibility in the Reflections Program.

A student may develop an entry in or outside of school.

3. Grade Divisions

Students may enter the Reflections Program in the appropriate division for their grade. The divisions are as follows:

- Primary: **preschool–grade 2**
- Intermediate: **grades 3–5**
- Middle/Junior: **grades 6–8**
- Senior: **grades 9–12**

If students do not fall under specific grade divisions, the national PTA organization suggests that they be grouped as follows:

- Primary: **up to age 7**
- Intermediate: **ages 8–10**
- Middle/Junior: **ages 11–13**
- Senior: **ages 14+**

It is the responsibility of the local PTA/PTSA to determine the appropriate division if necessary.

4. Arts Areas

Students may submit works in any of the six arts areas:

- Literature
- Musical composition
- Photography
- Visual arts
- Dance choreography
- Film production

The national PTA organization does not limit the number of entries a student may submit. All entries must include an artist statement that describes how the piece relates to the theme.

5. Children with Disabilities

PTA believes that each child with a disability should be provided a free and appropriate public education. Therefore,

the Reflections Program at the national level does not have a special division for students with disabilities. The national PTA organization believes it is the right of parents to place their child in the Reflections Program grade division that best reflects the child’s developmental age. However, guidelines for state and local Reflections Programs may vary. Check with your state PTA for its guidelines.

6. Deadlines

Each student must submit his or her work by the deadline established by his or her local PTA/PTSA. Each local PTA/PTSA sponsoring the program will set a deadline for entries in adherence with the state, district, and council needs. These entries are judged, and the selected works are forwarded to the next level of judging (council, district, or state). Direct all questions regarding deadlines or rules to your state PTA or state arts chair. The national PTA organization does not have deadlines for local, council, district, or state PTAs.

7. Judging

All national entries are judged on artistic merit, creativity, and interpretation of the theme.

The Reflections Program makes no restriction on content or subject in artwork. Students who are submitting entries need to meet school and/or local and state PTA standards. Judges review entries based upon creativity, artistic merit, and interpretation of the theme.

Each PTA determines its own judges for the program. Under no conditions may parents or students contact the judges to dispute the status of an entry. All decisions of judges are final.

8. Award Recipient Notification

State arts chairs will notify students who receive national recognition. State arts chairs will submit original photography and visual arts pieces to the national PTA organization for the creation of the Reflections Program Gallery on the PTA national website. Any artworks, awards, or certificates returned to the national PTA office due to insufficient or incorrect addresses will be mailed to the appropriate state office.

9. Further Information

Only your state PTA office and state PTA arts chair can provide you with information about your state’s Reflections Program rules and deadlines.

2008–2009 PTA Reflections Program
LITERATURE
Theme: “Wow!”

Students must adhere to the general participation rules as well as the following Literature Rules.

Description

A literature entry may be a work of fiction or nonfiction. Prose, poetry, and drama are all accepted. The entry must relate to the current Reflections Program theme.

Whether an entry uses a variety of techniques or a simple approach, it will be judged primarily on how well the student uses his or her artistic vision to portray the theme. A well-developed concept is more important than technique.

Originality

Each entry must be the original work of one student only. An adult may not alter the creative integrity of a student's work. Because the program is designed to encourage and recognize each student's individual creativity, help from an adult or collaboration with other students is not allowed. Use of copyrighted material is prohibited. Literature entrants are not to borrow from copyrighted material.

Plagiarism is defined as taking and using another person's ideas, writings, or inventions as one's own. Plagiarized entries will be disqualified and returned to the students.

Student Entry Form

All participants are required to fill out in its entirety and sign the Student Entry Form. Each participant is also required to submit an artist statement to describe how his or her piece relates to the theme. While there is no required length, the artist statement is mandatory for all entries. Students who have not completely filled out the entry form will not be eligible to participate in the program. In situations where the child cannot fill out the entry form or write legibly, a parent may sign his or her child's name.

Students have the option of placing the titles of their works on the Student Entry Form. If the entry has no title, please write “Untitled.”

Return of Artwork

The national PTA office does not return literature entries.

Judging

All national entries are judged on artistic merit, creativity, and interpretation of the theme. Due to the diversity of literary genres, the interpretation of the theme is weighted very heavily in judging.

Presentation

- Entries must not exceed 2,000 words.
- One original and one copy of the entry are to be submitted.

- Entries may be handwritten or typed, either on a typewriter or with a computer.
- Number all pages.
- Illustrated entries, including “books,” with pictures drawn by the student are acceptable; however, only literary content is judged.
- Entries are to reflect grade-appropriate grammar, punctuation, and spelling.

Format

- Submit entries on any kind of paper, not to exceed 8½ inches by 11 inches in size.
- Submit the original and one copy of the entry in a manila file folder with the Student Entry Form stapled to the back of the folder.
- Do not mount entries.
- Do not offer entries with printed text on both sides of the page.
- Write the student's name on the back of each page in case pages become separated.
- Collections of poems or short stories are not acceptable. A student may submit more than one work, but each one must be submitted separately.

Assistance

Dictation and typing:

- Students may have their entries typed by another person as long as the original work or a copy of the original work is attached.
- Students who are physically challenged or students in kindergarten or 1st grade may dictate to another person who may type or write down the original work.
- Transcribers should make every attempt to retain the same level of language and accuracy that is reflected in the student's original work.

Translation:

- Students for whom English is not their first language may submit literature entries in their own languages. **An interpretive translation must accompany the entry.**
- Translators should make every attempt to retain the same level of language and accuracy that is reflected in the student's original work.

Required Artist Statement

On the Student Entry Form, describe what inspired you to create this work and how it relates to the theme. This is required for all grade divisions.

2008–2009 PTA Reflections Program

MUSICAL COMPOSITION

Theme: “Wow!”

Students must adhere to the general participation rules as well as the following Musical Composition Rules.

Description

A musical composition entry may be for voice, instruments, or a combination of voice and instruments. Lyrics may or may not be included in vocal compositions. The composition is not to exceed five minutes. The entry must relate to the current Reflections Program theme.

The use of composition software is permitted. Students are strongly discouraged from submitting highly edited MIDI sequences or audio files. The recording submitted must capture performers in real-time. The entry may not include imported MIDI or other source files, or use algorithmic composition software.

Use of notation software for the purpose of creating scores and printed parts is permitted. Whether the score is handwritten or computer-generated, appropriate instrumentation and voicing are required for the performance.

Whether an entry uses a variety of techniques or a simple approach, it will be judged primarily on how well the student uses his or her artistic vision to portray the theme. A well-developed concept is more important than technique.

Originality

Each entry must be the original work of one student only. An adult may not alter the creative integrity of a student's work. Because the program is designed to encourage and recognize each student's individual creativity, help from an adult or collaboration with other students is not allowed. Use of copyrighted material is prohibited. Musical composition entrants are not to borrow from copyrighted material.

Plagiarism is defined as taking and using another person's ideas, writings, or inventions as one's own. Plagiarized entries will be disqualified and returned to the students.

Student Entry Form

All participants are required to fill out in its entirety and sign the Student Entry Form. Each participant is also required to submit an artist statement to describe how his or her piece relates to the theme. While there is no required length, the artist statement is mandatory for all entries. Students who have not completely filled out the entry form will not be eligible to participate in the program. In situations where the child cannot fill out the entry form or write legibly, a parent may sign his or her child's name.

Students have the option of placing the titles of their works on the Student Entry Form and must answer a few questions about how they created their works (see Required Information).

Return of Artwork

The national PTA office does not return musical composition entries.

Judging

All national entries are judged on artistic merit, creativity, and interpretation of the theme. Due to the diversity of musical genres, the interpretation of the theme is weighted very heavily in judging.

Presentation

Whether a student must submit musical notation is determined

by his or her grade division:

- Primary and Intermediate: No notation is required. Iconic notation may be submitted. Iconic notation is “made-up” notation.
- Middle/Junior and Senior: Notation, either traditional, tablature, or electronic, is required. The notation should aid the listener and serve as a guide through the piece.
- Adults may not assist. Physically challenged students may dictate to another person who may write the notation. The quality or accuracy of the notation and performance support the musical idea, but they are not considered judging criteria.

Format

- Entries may not exceed five minutes.
- Students are not required to perform their own compositions.
- A student's composed work may be performed by a group.
- Score size:
 - Entries should be no larger than 11” X 14”.
 - Band/orchestra compositions may be 11” X 16”.
 - Do not mount or bind the scores.

Recording Requirements

- All grade divisions must submit a CD recording of the composition.
- Submit the CD in a plastic or cardboard container; identify both the CD and the container with the student's name, grade division, state, and year.
- Pack the CD with the score (if required) in a large envelope. Write the student's name on the back of each page of the score in case pages become separated.
- Secure the Student Entry Form to the outside of the envelope with masking tape.

Recommendations for Quality Recordings

- Make the room you record in as quiet as possible. Close windows and turn off all noise-making devices in the room (air conditioners, fans, telephones, etc.). Do not place the recording device on top of an instrument or speakers.
- Don't record at too loud (in the red zone on the meter) or too soft (meter barely moving) a level.
- Record a short test and listen to it while watching the meter. If needed, improve recording quality by changing the record volume or microphone location.
- Return to the beginning of the CD and record two seconds of silence; then start performing your composition. Finish with another two seconds of silence.

Required Information

On the Student Entry Form, please answer the following:

- Who performed your composition?
- Did you use traditional instrumentation or a synthesizer?
- If you used MIDI, what software and hardware did you use to compose your work?
- If you included lyrics, how do they work with your composition?

Required Artist Statement On the Student Entry Form, describe what inspired you to create this work and how it relates to the theme. This is required for all grade divisions.

2008–2009 PTA Reflections Program
PHOTOGRAPHY
Theme: “Wow!”

Students must adhere to the general participation rules as well as the following Photography Rules.

Description

A photography entry must be an original black-and-white or color image, or a group of images, produced by a photographic process. The entry must relate to the current Reflections Program theme.

The entry may incorporate such techniques as montage, multiple exposure, negative sandwiches, and photograms. Images may be manipulated conventionally or digitally. Images should demonstrate the student’s proper use of photographic techniques such as depth of field and exposure. The images may be created using various lenses, filters, and light sources. Photographs with added graphics over the image, including lettering, are not acceptable.

Whether an entry uses a variety of techniques or a simple approach, it will be judged primarily on how well the student uses his or her artistic vision to portray the theme. A well-developed concept is more important than technique.

Originality

Each entry must be the original work of one student only. An adult may not alter the creative integrity of a student’s work. Because the program is designed to encourage and recognize each student’s individual creativity, help from an adult or collaboration with other students is not allowed. Use of copyrighted material is prohibited. This includes the use of copyrighted cartoon characters or other such material.

Plagiarism is defined as taking and using another person’s ideas, writings, or inventions as one’s own. Plagiarized entries will be disqualified and returned to the students.

Student Entry Form

All participants are required to fill out in its entirety and sign the Student Entry Form. Each participant is also required to submit an artist statement to describe how his or her piece relates to the theme. While there is no required length, the artist statement is mandatory for all entries. Students who have not completely filled out the entry form will not be eligible to participate in the program. In situations where the child cannot fill out the entry form or write legibly, a parent may sign his or her child’s name.

Students have the option of placing the titles of their works on the Student Entry Form and must answer a few questions about how they created their works (see Required Information).

Return of Artwork

Please contact your state PTA for its artwork return policy. If your entry receives a national-level award, your original artwork will be used to prepare the Reflections Program online gallery. Your artwork may also be chosen to participate in other shows or exhibits; if so, the national PTA office will contact you to inform you of the approximate date of the return of your artwork. If your work is not chosen for additional display outside the online gallery, the national PTA office will make every effort to return your artwork by early 2010.

Judging

All national entries are judged on artistic merit, creativity, and interpretation of the theme. Due to the diversity of photographic processes and treatments, the interpretation of the theme is weighted very heavily in judging.

Presentation

- A single print or collage may not exceed 11 inches by 14 inches, including a mat.
- Print the entries on paper or other two-dimensional material.
- Mount all prints on a cardboard mat, poster board, or some other sturdy material.
- Protecting the work with shrink-wrap or a transparent plastic cover is optional but highly recommended.
- Framed entries, original film (negatives or transparencies), and multidimensional pieces are not accepted.
- Place the Student Entry Form in a sheet protector and tape it (with masking tape) to the back of the photograph on top of the shrink-wrap.

Required Information

On the Student Entry Form, give the dimensions of the piece and describe the process used in preparing the piece.

Required Artist Statement

On the Student Entry Form, describe what inspired you to create this work and how it relates to the theme. This is required for all grade divisions.

2008–2009 PTA Reflections Program VISUAL ARTS

Theme: “Wow!”

Students must adhere to the general participation rules as well as the following Visual Arts Rules.

Description

A visual arts entry must be an original print, drawing, painting, collage, photographic collage, metal etching or punch work, fiber work, or computer-generated artwork that relates to the current Reflections Program theme.

Whether an entry uses a variety of techniques or a simple approach, it will be judged primarily on how well the student uses his or her artistic vision to portray the theme. A well-developed concept is more important than technique.

Originality

Each entry must be the original work of one student only. An adult may not alter the creative integrity of a student's work. Because the program is designed to encourage and recognize each student's individual creativity, help from an adult or collaboration with other students is not allowed. Use of copyrighted material is prohibited. This includes the use of copyrighted cartoon characters or other such material.

Plagiarism is defined as taking and using another person's ideas, writings, or inventions as one's own. Plagiarized entries will be disqualified and returned to the students.

Student Entry Form

All participants are required to fill out in its entirety and sign the Student Entry Form. Each participant is also required to submit an artist statement to describe how his or her piece relates to the theme. While there is no required length, the artist statement is mandatory for all entries. Students who have not completely filled out the entry form will not be eligible to participate in the program. In situations where the child cannot fill out the entry form or write legibly, a parent may sign his or her child's name.

Students have the option of placing the titles of their works on the Student Entry Form and must answer a few questions about how they created their works (see Required Information).

Return of Artwork

Please contact your state PTA for its artwork return policy. If your entry receives a national-level award, your original artwork will be used to prepare the Reflections Program online gallery. Your artwork may also be chosen to participate in other shows or exhibits; if so, the national PTA office will contact you to inform you of the

approximate date of the return of your artwork. If your work is not chosen for additional display outside the online gallery, the national PTA office will make every effort to return your artwork by early 2010.

Judging

All national entries are judged on artistic merit, creativity, and interpretation of the theme. Due to the diversity of artistic media, the interpretation of the theme is weighted very heavily in judging.

Presentation

- All art must be flat and may not be more than 3/8 inch thick. This includes all two-dimensional materials and images, including small, flat items (such as string, fabric, and screening) that have maximum surface contact with the face of the image. Nothing three-dimensional (noodles, beans, beads, boxes, etc.) may extend off the surface of a work.
- No art may exceed 24 inches by 30 inches, including a mat.
- Entries may be submitted on paper, canvas board, cardboard, hot or cold pressboard, or canvas (not to exceed 3/8-inch thickness).
- Mount all paper or canvas entries on sturdy cardboard mats, but not in wooden, metal, plastic, or glass frames.
- Protecting the work with shrink-wrap or a transparent plastic cover is optional but highly recommended.
- Lamination is discouraged because it can permanently damage the surface of the artwork.
- Place the Student Entry Form in a sheet protector and tape it (with masking tape) to the back of the artwork on top of the shrink-wrap.

Works Not Accepted

- Sculpture, ceramics, jewelry, and other three-dimensional artwork
- Reproductions or enlargements of other artwork

Required Information

On the Student Entry Form, give the dimensions of the piece and describe the medium (crayons, oil on canvas, etc.).

Required Artist Statement

On the Student Entry Form, describe what inspired you to create this work and how it relates to the theme. This is required for all grade divisions.

2008–2009 PTA Reflections Program
DANCE CHOREOGRAPHY
Theme: “Wow!”

Students must adhere to the general participation rules as well as the following Dance Choreography Rules.

Description

Dance choreography entries must be original choreographed dance composition works recorded on a DVD or CD. The choreography must be the work of one student and must demonstrate creativity and interpretation of the current Reflections Program theme.

There may be up to three dancers performing the choreography. The choreographer may be the performer or one of the performers, but does not have to be. Costumes are not necessary. If costumes are used, however, the choreographer must also create the costumes or directly note that the costumes are not the original work of the student.

Whether an entry uses a variety of techniques or a simple approach, it will be judged primarily on how well the student uses his or her artistic vision to portray the theme. A well-developed concept is more important than technique. Therefore, it is very important that the student show a clear relation of the dance choreography to the theme. The connection should be made evident through the use of song, props, or the dance itself.

Originality

Each entry must be the original work of one student only. An adult may not alter the creative integrity of a student's work. Because the program is designed to encourage and recognize each student's individual creativity, help from an adult or collaboration with other students is not allowed. Use of copyrighted material other than music is prohibited.

Plagiarism is defined as taking and using another person's ideas, writings, or inventions as one's own. Plagiarized entries will be disqualified and returned to the students.

Student Entry Form

All participants are required to fill out in its entirety and sign the Student Entry Form. Each participant is also required to submit an artist statement to describe how his or her piece relates to the theme. While there is no required length, the artist statement is mandatory for all entries. Students who have not completely filled out the entry form will not be eligible to participate in the program. In situations where the child cannot fill out the entry form or write legibly, a parent may sign his or her child's name.

Students have the option of placing the titles of their works on the Student Entry Form and must answer a few questions about how they created their works (see Required Information).

Return of Artwork

The national PTA office does not return dance choreography entries.

Judging

All national entries are judged on artistic merit, creativity, and interpretation of the theme. Due to the diversity of dance styles, the interpretation of the theme is weighted very heavily in judging.

Music

The title, composer, and performer of any background music must be credited and documented on the Student Entry Form. If the entry's connection to the theme is expressed in the song choice, this should be explained in the artist statement.

Presentation

- Entries may not exceed five minutes.
- All grade divisions must submit a DVD or CD of a performance of the choreography.
- The choreographer is not required to be the (or one of the) performer(s).
- The performance should directly relate to the theme.
- Submissions should be in one of the following file formats:
 - .MPG / .MPEG
 - .MOV / .QT (Quicktime Video)
 - .WMV (Windows Media Video)
- The recorded performance should be saved as a file on the DVD/CD, not as a DVD/CD movie.
- Submit the DVD or CD in a plastic or cardboard container; identify both the DVD/CD and the container with the student's name, grade division, state, and year.
- Pack the DVD/CD in a large envelope.
- Secure the Student Entry Form to the outside of the envelope with masking tape.

Recommendations for Quality Recordings

- Use a tripod to hold the camera still.
- Make sure there is plenty of lighting, especially if shooting indoors.
- Turn off all noise-making devices in the room (air conditioners, fans, telephones, etc.).
- Make sure the background music (if any) is audible on the recording.

Required Information

On the Student Entry Form, state who performed the choreography and credit the background music.

Required Artist Statement

On the Student Entry Form, describe what inspired you to create this work and how it relates to the theme. This is required for all grade divisions.

2008–2009 PTA Reflections Program

FILM PRODUCTION

Theme: “Wow!”

Students must adhere to the general participation rules as well as the following Film Production Rules.

Description

A film production entry must be an original work of fiction or nonfiction relating to the current Reflections Program theme. Entries may be with or without sound.

The student submitting the entry must be the director, screenwriter, and cameraperson. If using a computer, the student must do all of the work. If the student chooses to appear in the production, a camera on a tripod may be used. All storyboarding, editing, etc., must be done by the student.

Whether an entry uses a variety of techniques or a simple approach, it will be judged primarily on how well the student uses his or her artistic vision to portray the theme. A well-developed concept is more important than technique.

Categories

- **Animation:** Animation may be drawn; created from a collection of objects, clay, torn paper, etc.; or computer-generated.
- **Narrative:** A story told through the images created on film or computer. (This is not the same as a storyteller narrating an original story.)
- **Documentary:** Nonfiction documentation using narration, facts, and images.
- **Experimental:** Video that explores movement, light, and montage.
- **Media presentations:** Computer-generated media presentations must be completely original, and the student must do all the work. Cutting and pasting from other sources is not permitted.
- **PowerPoint presentations will not be accepted.** Students must adhere to copyright laws. Software should be used only to enhance and present the work of the student. Due to the fact that most graphic elements of PowerPoint presentations are copyrighted clip art, use of this program is prohibited.

Originality

Each entry must be the original work of one student only. An adult may not alter the creative integrity of a student's work. Because the program is designed to encourage and recognize each student's individual creativity, help from an adult or collaboration with other students is not allowed. Use of copyrighted material other than music is prohibited.

Plagiarism is defined as taking and using another person's ideas, writings, or inventions as one's own. Plagiarized entries will be disqualified and returned to the students.

Student Entry Form

All participants are required to fill out in its entirety and sign the Student Entry Form. Each participant is also required to submit an artist statement to describe how his or her piece relates to the theme. While there is no required length, the artist statement is mandatory for all entries. Students who have not completely filled out the entry form will not be eligible to participate in the program. In situations where the child cannot fill out the entry form or write legibly, a parent may sign his or her child's name.

Students have the option of placing the titles of their works on the Student Entry Form and must answer a few questions about how they created their works (see Required Information).

Return of Artwork

The national PTA office does not return film production entries.

Judging

All national entries are judged on artistic merit, creativity, and interpretation of the theme. Due to the diversity of film styles, the interpretation of the theme is weighted very heavily in judging.

Music

The title, composer, and performer of any background music must be credited and documented on the Student Entry Form. If the connection to the theme is expressed in the song choice, this should be explained in the artist statement.

Presentation

- Entries may not exceed five minutes.
- The film should directly relate to the theme.
- The student submitting the entry is not required to appear in the video.
- Submissions should be in one of the following file formats:
 - .MPG / .MPEG
 - .MOV / .QT (Quicktime Video)
 - .WMV (Windows Media Video)
- Entries should be submitted on CD or DVD. The entry should be saved as a file on the CD/DVD, not as a CD/DVD movie.
- Submit the CD or DVD in a plastic or cardboard container; identify both the CD/DVD and the container with the student's name, grade division, state, and year.
- Pack the CD/DVD in a large envelope.
- Secure the Student Entry Form to the outside of the envelope with masking tape.

Recommendations for Quality Recordings

- Use a tripod to hold the camera still.
- Make sure there is plenty of lighting, especially if shooting indoors.
- Think about sound. Use an extra microphone (boom mike) if needed. Turn off all noise-making devices in the room (air conditioners, fans, telephones, etc.).

Required Information

On the Student Entry Form, please answer the following:

- Who appears in your film? (It is suggested that you gain parental consent for any minors who appear in your film.)
- Was a computer used? If so, name the software and hardware.
- Was any background music used? If so, credit the music.

Required Artist Statement

On the Student Entry Form, describe what inspired you to create this work and how it relates to the theme. This is required for all grade divisions.

FORM A

UNIT

NATIONAL PTA 2008-2009 REFLECTIONS PROGRAM

PTA PARTICIPATION FORM

“Wow!”

This form must accompany entries. Please complete this form and forward with your entries to the council or district level of judging. If you do not have accurate figures, please give your best estimate of the number of students who participated in the Reflections Program from your Unit.

Name of Unit _____

Council _____ District _____

Reflections Chairman _____ Phone (____) _____

Address _____ E-Mail _____

Total number of entries (by age division) submitted by students belonging to your Unit:					
ENTRIES	Primary (Preschool–2)	Intermediate (3–5)	Middle/Jr. (6–8)	Senior (9–12)	TOTAL RECEIVED
Literature					
Visual Arts					
Photography					
Musical Composition					
Dance Choreography					
Film/Video Production					
TOTAL entries per grade					

Total number of student entries (by age division) forwarded to your Council (or District if you have no Council).						
ENTRIES	Primary (Preschool–2)	Intermediate (3–5)	Middle/Jr. (6–8)	Senior (9–12)	RECEIVED	FORWARDED
Literature						
Visual Arts						
Photography						
Musical Composition						
Dance Choreography						
Film/Video Production						
TOTAL entries per grade						

This form must accompany entries for the Council/District level of judging. Check student entry forms to see that all information on the Official Entry Form is complete.



PTA

everychild.onevoice.®

Celebrate your talents

Do you **express** your creativity through dance, music, story, or poetry?
Do you **dream** of having your drawings displayed in a special exhibit?
Do you **enjoy** taking photographs or videotaping your friends?

Participate in PTA's Reflections Program.

Join thousands of other students as they create entries
based on the 2008–2009 theme, “Wow!”

Think about the theme. Then select a category:

- ❖ Film Production ❖ Dance Choreography
- ❖ Musical Composition ❖ Photography
- ❖ Visual Arts ❖ Literature

Put on your dancing shoes, grab a camera, or pick up
a pen or paintbrush and create! It'll be fun!

Check out what other kids did last year.
Visit the Reflections Program gallery online
at www.pta.org.

Suggested for preschool through 5th grade



Let your talent shine

Are you looking for a way to express yourself and show others your talent as a **photographer, visual artist, writer, composer, choreographer, or film producer?**

Participate in PTA's Reflections Program.

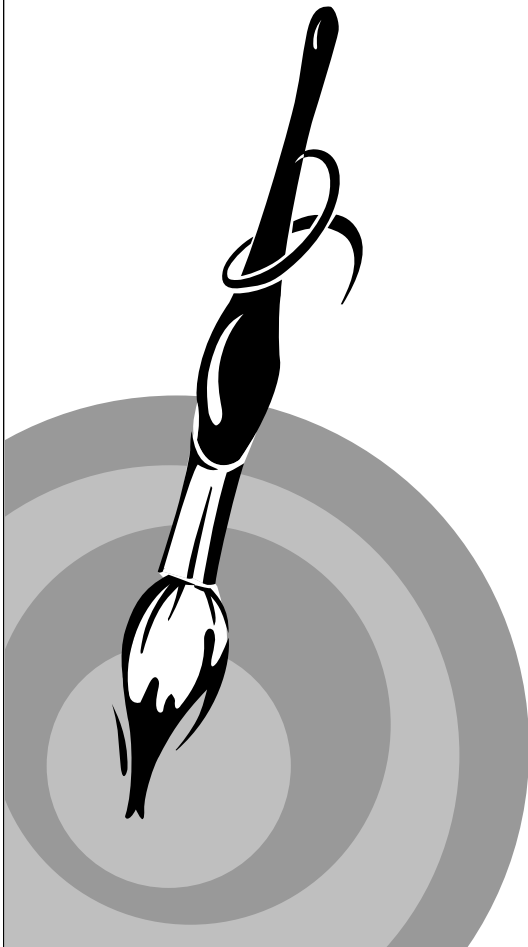
The 2008–2009 theme is “Wow!”

Think about what you can do to make a difference.
Then create an original piece of artwork
in one of six categories:

- ❖ Musical Composition ❖ Dance Choreography
- ❖ Film Production ❖ Literature
- ❖ Visual Arts ❖ Photography

Express your thoughts and creativity,
and earn recognition.

To view a gallery of last year's national award-winning entries,
visit www.pta.org.



Suggested for 6th through 12th grade

Unleash your child's talents

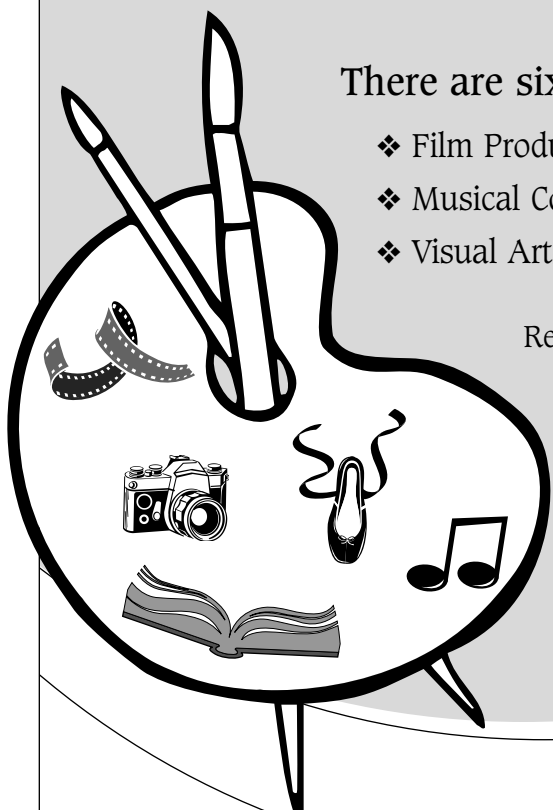
Students who participate in the arts do better in school, and the PTA Reflections Program gives students an opportunity to receive recognition for their artistic endeavors.

Encourage your child to create an original work of art based on the 2008–2009 Reflections Program theme, “Wow!”

There are six arts categories to choose from:

- ❖ Film Production ❖ Dance Choreography
- ❖ Musical Composition ❖ Photography
- ❖ Visual Arts ❖ Literature

Reflections Program awards are given at the local, council, district, state, and national levels. National award-winning entries are showcased in the PTA Reflections Program gallery at www.pta.org.



For Reflections Program rules and deadlines, contact your local PTA.



Arts and Culture

Thrive with PTA

Artists Thrive with Reflections



Six Reflections Program categories to be judged at the national level in 2008–2009!

- ❖ Photography
- ❖ Visual Arts
- ❖ Literature
- ❖ Musical Composition
- ❖ Dance Choreography
- ❖ Film Production

The Reflections Program theme for 2008–2009: “Wow!”

Arts and culture enhance children’s learning experiences and bring children’s imaginations to life. All children deserve a quality arts education and cultural awareness opportunities. We are the advocates!

Celebrate creativity and diversity, and invite all students to express themselves and showcase their talents. Participate in the Reflections Program with PTA.

Prizes awarded in all categories. Grant opportunities available for PTA schools.

Visit
www.pta.org